

**GIS Implementation**      **Geodatabase Services**      **Custom GIS Applications**  
**Data Conversion**      **GPS Data Collection**      **Mobile Mapping Solutions**  
**Map Book Production**      **Training & Education**

## Pleasant Hill uses Multi-tasking Voyager to Meet Demands for Reliable City Data

Released June 2008, Des Moines, IA

Dave Leonard, Pleasant Hill's Building Division Supervisor & Planner, purchased the complete NewComTech GIS package for his city of 7,000: The hardened tablet computer with integrated camera and docking station, three seats of Voyager inspection software, the SeeCity desk top application, and data compilation of Pleasant Hill's sidewalk feature set.

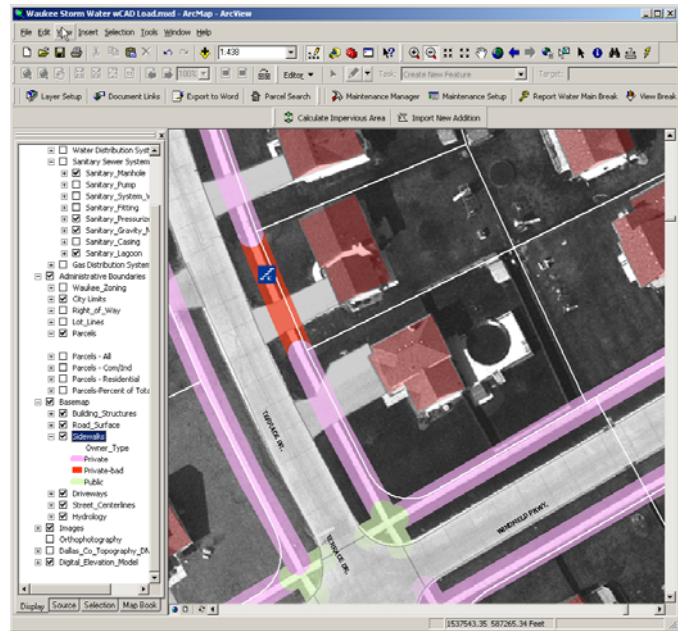
The Voyagers have been in the field for about a year, currently being used to collect data for the Storm Sewer System Map and Watershed Assessment Program MS4 permit requirements.

In addition, phase one of a sidewalk survey was completed in one day when in the past it took one week with paper forms and a printout from the city clerk's Access database. The infraction notices were easily compiled and sent to the owners with the built in Notification Manager system imbedded in the Voyager program.

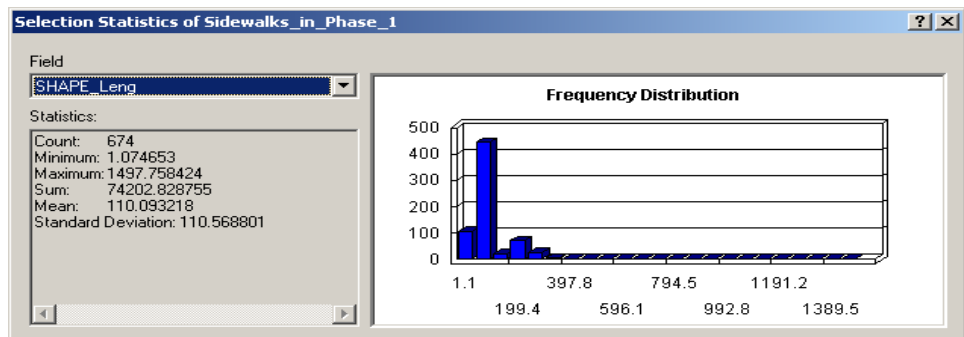
"The first time I turned two guys loose (after two hours training) that had never used GIS before, they were amazed," With the ease of use and the simple functionality of the Voyager programs, Leonard says

there's "no need to get lost in GIS land, because the city doesn't need but 10% of what GIS is capable of. NewCom creates that link from the GIS world to the person who's in the field."

In addition to the sidewalk feature set that was created by NewCom, the Pleasant Hill field crew are collecting manhole data for the sanitary system and entering it real-time in the field. "We use the GIS data every time to do a locate for a sewer back up. I have future plans to work with Hydra Clean to have the video imbedded in the Voyager database and to also use the data for routine maintenance."



Statistics for Sidewalk Survey Phase 1 – Pleasant Hill Sidewalk Survey



**74,202 feet or 14 miles of sidewalk data and more than 1500 parcels included in the survey area, which was completed in one day with Voyager.**

### All Inspection Functions on One Mobile Tablet

The responsibility of collecting the city’s GIS and parcel data has fallen to Leonard and his Building Inspection crew by default because the Voyager can do so much.

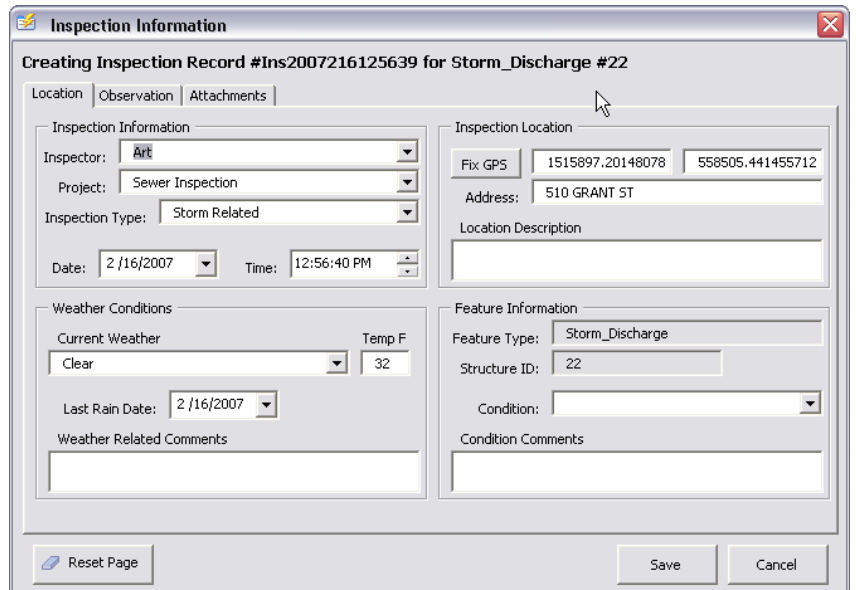
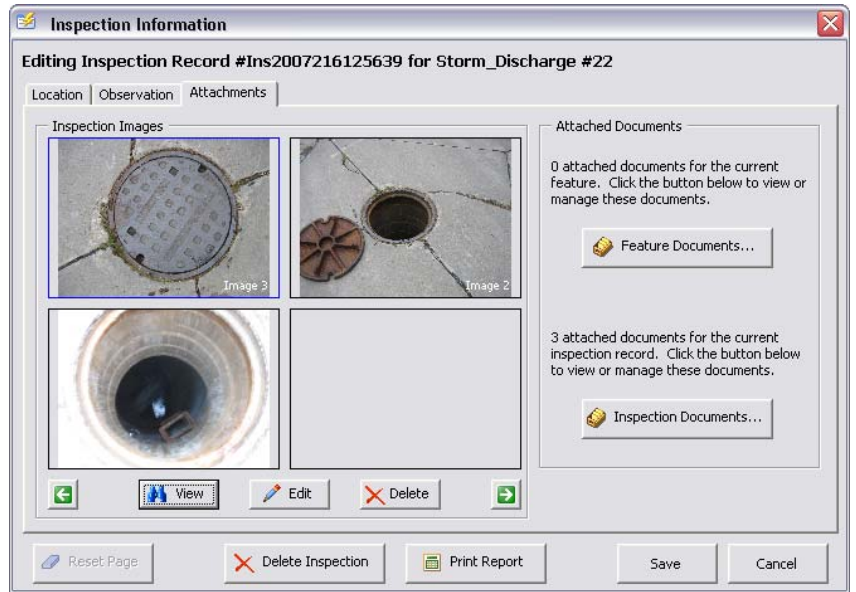
Currently inspectors have access to more than 30 different residential and commercial building permits, plus construction permits, that can be pulled up on screen and an entire inspection and permit record can be created and reviewed for any given parcel in the city. Armed with their Voyager tablets the crew gathers data and inspects the storm and sanitary system, the watershed, sidewalks, and Voyager was used to locate and inspect trees during an Ash bore epidemic.

Leonard says the savings from purchasing the Voyager were immediate; the city postponed hiring a Storm Water Coordinator for the year and still met compliance regulations at the 60 sites that were inspected. Leonard also estimates that the city’s population would have to double (to 14,000) before there will be a need to hire another building and construction inspector.

Other savings are to be found in the time it now takes to issue a permit or an infraction notice. The city clerk used to compile the paper data into an Access database, search for parcel data from the county, attach separate photos, and mail it out. Now the clerk can retrieve data from Voyager in her SeeCity GIS database, click on a parcel and the documents are created automatically, and the activity is recorded in the parcel database.

“There is less dispute now over the inspection record, with the photo included,” Leonard explained, “we are planning to equip the trucks with printers so the record can be handed out at the site.”

(For more information contact Jeff Doty, 800-626-6234 or [jdoty@newcomtech.com](mailto:jdoty@newcomtech.com))



## **VOYAGER** *Durable Mobile Inspection*

### **Hardware**

Rugged Voyager Tablet PC

Integrated GPS – for map tracking and routing

AllVue screen technology for reading in direct sunlight

Bluetooth enabled for printing to a mobile printer

Internal wireless 802.11b/g

### **Digital Camera**

Wireless for remote connection to the Voyager Tablet PC

### **Software**

ArcView 9.2

Windows XP Pro operating system

Microsoft Office 2003 Pro – suite

Voyager application customized for the user's needs.

